

| | | |
|----------------------------|--------------|--|
| Agenda Item: | 8.1 | |
| Starred Item: | | |
| Publication status: | Open | |
| | Confidential | |

Executive Summary

| | | | |
|----------------------------------|---|---|---|
| Meeting/s | Finance Planning and Resources Committee | Date/s | 16/03/2023 |
| | Choose an item. | | Click or tap to enter a date. |
| | Choose an item. | | Click or tap to enter a date. |
| Report title | Environmental and Sustainability Policy Action Plan – Progress Update. | | |
| Author | <i>Sue Lockett, Director of Facilities</i> | | |
| Action | For Decision | <input type="checkbox"/> | For Information <input checked="" type="checkbox"/> |
| Executive Summary | <p>This Report provides an update on the Groups Action Plan setting out the STCG approach to Environmental Sustainability, endorsing and aligning with the FE/EAUC Climate Action Road Map as an ‘Emerging’ College. The attached version of the action plan sets out the required actions and details progress achieved for the second year of the plan, realising emerging status by June 23.</p> <p>This version of the action plan was reported to the Environment and Sustainability Advisory Group on 9/2/23. Items highlighted in Yellow are the key updates on progress reported to the Group.</p> <p>Also attached are:</p> <p>Appendix A – STCG Climate Emergency Commitment Document</p> <p>Appendix B – Report to Environment and Sustainability Advisory Group on Carbon Reporting – Future Net Zero Report and Targets.</p> <p>Appendix C – Future Net Zero Report – 2021/22 Accredited Version</p> | | |
| Recommendations | For information | | |
| Link to Strategic Plan: | | | |
| Strategic Ambition/s | | Strategic Target Description/s | |
| Digital Transformation | <input type="checkbox"/> | | |
| Equalities | <input type="checkbox"/> | | |
| Finance and Resources | <input checked="" type="checkbox"/> | | |
| Growth | <input type="checkbox"/> | | |
| Partnerships | <input type="checkbox"/> | | |
| Quality | <input type="checkbox"/> | | |
| Wellbeing and Safeguarding | <input type="checkbox"/> | | |
| Implications: | | Brief description of implication | |
| Students/curriculum/safeguarding | <input type="checkbox"/> | | |



| | | |
|---|---|---|
| Financial | X | Expected Reduction in overhead costs and focusing investment on strategic priorities and invest to save projects. |
| Human Resources | | |
| Legal/Statutory/Compliance/Governance | X | Non Compliance, Prosecution or censure – Requirement to Report on Carbon Footprint and targets. |
| Equality, Diversity and Inclusion | | |
| Reputational | X | Reported Carbon Footprint and Carbon Reduction Plan in public domain, use of resources etc. |
| Link to risk/s: | | |
| Risk 1: Insufficient 16 to 18-year-old learners either enrol or quality for funding | | Risk 8: The financial performance of the College does not allow for a pay increase and/or performance bonus to be paid to staff |
| Risk 2: Higher Education enrolment targets are not met | | Risk 9: Staff satisfaction levels and wellbeing adversely impact on performance |
| Risk 3a: ESFA classroom-funded Adult learners do not enrol to planned levels | | Risk 10: The Group is unable to attract sufficiently qualified staff to provide its services |
| Risk 3b: ESFA Adult Learning Loan Learners do not enrol to planned levels | | Risk 11: Data required for the management and financial reporting is lost and not recoverable or IT infrastructure experiences a major fault which cannot be rectified in a timely manner. |
| Risk 4: Planned Apprenticeship recruitment levels are not achieved | | Risk 12a: The Group's management of staff and student health, safety and wellbeing are not sufficient. |
| X Risk 5: An imbalance between income and expenditure to the extent that expenditure levels are not affordable | | Risk 12b: The Group's safeguarding arrangement for student (including Prevent responsibilities) are not sufficient. |
| Risk 6: Insufficient cash flow | | Risk 13: Failure to comply with Equality Discrimination Legislation |
| Risk 7: The Group has too much accommodation when compared to the amount required to meet demand and/or the accommodation is of poor quality | | Risk 14: An external inspection of the Group produces a negative judgement overall |
| | X | Risk 15: Unavailability of significant parts of the accommodation due to fire, flood, etc. |
| | | Risk 16: Poor Apprenticeship achievement rates |
| | | Risk 17: Failure to comply with procedures and regulations connected to learner funding as set out by each funding body |
| | | Risk 18: English and Maths achievement rates are low |
| | | Risk 19a: Governance arrangements are not effective |
| | | Risk 19b: Leadership arrangements are not effective |
| | X | Risk 20: Failure to embrace, contribute to, respond to or deliver on relevant national or local government policy or objectives (including Brexit) |
| | | Risk 21: The Covid-19 (SARS-CoV-2) virus impacts on operational effectiveness |

Road Map to Sustainability Action Plan 2021 to 2023

This action plan sets out a whole STCG Group approach to Environmental Sustainability, endorsing and aligning with the FE Climate Action Road Map as an Emerging College. The Action Plan below specifies actions for the **second** year 2022-23, realising Emerging Status by June 23.

What does an emerging College look like and how are we progressing?

- It has a good understanding of the views of its students and staff on sustainability and their appetite for ambitious change
- Its Students and staff understand the basics of Climate Change and are Carbon Literate
- It understands the different types of GHG emissions and what contributes to its Carbon Footprint
- It has a good understanding of its current carbon footprint in respect of Scope 1 and Scope 2 emissions
- It has strategies in place to reduce energy use and understands the impact on its Carbon Footprint
- It has a Net Zero Target for 2050 and 2-3 interim targets.
- It has made a public statement recognising the Climate Emergency
- It is possible to recycle in every building
- It is possible for Students and Staff to make sustainable food choices on campus

Overall, we believe we have made reasonable progress to achieving Emerging Status when compared to the FE Climate Action Road Map.

| | | | | | | |
|--|--|---|---|--|--|---|
| <p>sustainability and their appetite for ambitious change. (Leadership and Management).</p> <p>(Partnership and Engagement).</p> | | <p>Feb 23</p> | <p>SCL/JAM/JG</p> | <p>Promotions in LRC at each campus with activities for Staff and Students to complete. JM Team Developing Resources to support event including ideas board rather than surveys.</p> <p>STCG Sustainability and Green Conference 26.1.23. for Employers and Local Business. HE and Partnerships Team.</p> | <p>Communities. Building the case for change.</p> | <p>6.1.23 with JM & Team. Themes/focus/rotated around each campus during sustainability week to be held w/c 6th February.</p> |
| <p>STCG Students and staff understand the basics of Climate Change and are Carbon Literate</p> <p>(Teaching, Learning and Research).</p> | <p>Raise awareness through delivery of Carbon Literacy Training to all Staff and Students.</p> | <p>Delivery for students from May 23 Resources being developed on Moodle VLE.</p> | <p>DoFac/AP Quality</p> <p>AP Student Services/ AP Quality</p> <p>AP Quality.</p> | <ul style="list-style-type: none"> Identify online training module. To include Climate Change, Carbon Footprint and other topical Environmental issues. Incorporate Green module in Student Tutorial for 23/24 (Quality/Student Services) Incorporate module in Staff Mandatory Training Programme for 22/23 (Quality) | <ul style="list-style-type: none"> To develop good awareness of Climate Change and the causes. To develop awareness of individual actions needed to reduce individual environmental impact. To develop carbon literacy within the Group's Communities | <ul style="list-style-type: none"> Costs involved in certifying and delivering training. Group develop their own online version? Investigate Carbon Literacy Project available Training. Jan 23 Embedding Sustainability and Green Skills Training (EAUC) made available to all Teaching Staff on SD Day. Staff resources uploaded on |

| | | | | | | |
|--|--|---------|--------------|--|--|---|
| | | | | | | sustainability Teams Page. |
| STCG understands the different types of GHG emissions and what contributes to its Carbon Footprint (Teaching Learning and Research). | Upskill Facilities Management Team on measuring emissions/Carbon Footprint including Scope 1, 2 and 3 emissions. (Scope 3 where practical to do so). | Jan 23 | DoFacilities | <ul style="list-style-type: none"> • Draw on external resources, Guidance from AOC, EAUC, Greenhouse Gas Protocol Guidance. • Connect with other Colleges with leading status to learn from others in the sector. • Work with appointed Utilities Analysts and Consultants (Trident Utilities). | <ul style="list-style-type: none"> • Evidence of upskilling having taken place. • Develop body of information, knowledge and expertise. | <ul style="list-style-type: none"> • DoFac attended IWFM Sustainability Conference • AOC Carbon Reduction Webinar in May 22. • Facilities Managers to attend Carbon Reporting Workshops Feb 23 (as above). • Group join EAUC £1,179? • DoFac/Group Principal attending Wandsworth Sustainability Partnership Meetings. |
| STCG has a good understanding of its current carbon footprint in respect of Scope 1 and Scope 2 emissions (Data Collection). | Measure Carbon Footprint using existing Data. | Dec 23. | DoFacilities | <ul style="list-style-type: none"> • Estates Team collect available data to measure College's carbon footprint. • Measure Scope 1 & 2 • Estimate Scope 3 using any available data • Make use of Carbon accounting Software to measure and project emissions. | <ul style="list-style-type: none"> • Establish a baseline • Inform Net Zero Carbon Targets • Identify any gaps in in the Groups current energy data collection. | <ul style="list-style-type: none"> • Facilities are working on this with Trident Utilities. Data collated for measurement December 22. • Emissions calculated and Draft Carbon Reports available Jan 23. • Subscription for Carbon Accounting Software purchased |

| | | | | | | |
|--|--|---------------|--------------|--|---|---|
| | | | | | | from Trident on subscription basis £2,500 pa. |
| STCG has a good understanding of its current carbon footprint in respect of Scope 1 and Scope 2 emissions (Leadership & Management). | Prepare Draft Carbon Reports for Validation. | Feb 23. | DoFacilities | <ul style="list-style-type: none"> • Draft Reports prepared. • Submitted for Future Net Zero Standard Assessment. | <ul style="list-style-type: none"> • Future Net Zero Standard Achieved. | <ul style="list-style-type: none"> • Draft Carbon Reports for 18/19 (reference year) 19/20, 20/21 & 21/22 Produced December 22. Assessed through Future Net Zero Standard. (-18% reduction in Carbon from reference year). Reports with Assessor for Validation, January 23. Once validated, STCG Carbon Footprint will be certified and reassessed on an annual basis and can be published. |
| STCG has strategies in place to reduce energy use and understands the impact on its Carbon Footprint | Implement Strategies to reduce energy use. | From Nov. 22. | DoFacilities | <p>Quick Wins identified.</p> <ul style="list-style-type: none"> • Reduce Heating by 1 Deg, establish standard set temperature across Group of 20 deg C. (CIBSE) • Adjust Heating Timers to switch off one hour earlier. • Switch It off Campaign | <ul style="list-style-type: none"> • Identify low or no cost energy reduction initiatives/quick wins. • Reduce Energy use immediately • Build momentum for future invest to save initiatives | <ul style="list-style-type: none"> • Projects incorporated in 22/23 Capital Programme Replacement of BMS Systems Kingston & Merton. • Nov 22. Obtained quotes from Save Money Cut Carbon |

| | | | | | | |
|---|--|----------|--------------|---|--|---|
| (Estates and Operations). | | | | <ul style="list-style-type: none"> • Site Engineers do Termly Energy Audits • External Lighting Audit (Timer Controls) • Investigate CO2 reductions through change in filter type on Air Handling Units. <p>Other initiatives in planning:</p> <ul style="list-style-type: none"> • Agree Transport Policy – Future Vehicle Replacements to be electric. • Building Maintenance Policy – Future Lighting Replacements to LEDs - Programme of Retrofitting TRVs on Radiators. | <ul style="list-style-type: none"> • Detailed Practical Carbon Reduction Action Plan. • Carbon Reduction Strategy. | <p>to undertake Building Surveys to identify Carbon Reduction Opportunities in form of Invest to Save projects for Scope 1 & 2 Energy and Water Savings. Cost for Building Surveys £25,000 Excl. VAT Alternative quotes being sought. Consider Pilot? CIC Kingston?</p> <p>KHR & CIC £9,150 CC £4,100 MC £7,500 TC £2,350 STC £2,350</p> <ul style="list-style-type: none"> • Meeting with Mitie on progress – quick wins and BMS projects 9/1/23. • Mitie Providing alternative Strategy and quotes for Carbon Reduction Surveys – Feb 23. |
| STCG has strategies in place to reduce energy use and | Identify Sources of Grant Funding for Invest to Save Projects. | April 23 | DoFacilities | <ul style="list-style-type: none"> • Scan sources of information including DfE Capital, Trident Utilities Consultants, | <ul style="list-style-type: none"> • Identification, funding and delivery of Invest to Save Projects to | <ul style="list-style-type: none"> • Delivery in 23/24 Capital Programme and beyond. |

| | | | | | | |
|---|--|--|--|--|--|---|
| <p>understands the impact on its Carbon Footprint</p> <p>(Estates and Operations).</p> | | | | <p>Public Sector Decarbonisation Scheme and Salix Funding for Sources of Grant Funding.</p> <ul style="list-style-type: none"> • Agree potential projects with SLT/Sustainability Committee • Preparation of Bids. • Inclusion of Invest to Save Projects in Group's Capital Funding Programme. | <p>deliver Carbon Reduction.</p> <ul style="list-style-type: none"> • Contribution to Group's Carbon Reduction Targets. | <ul style="list-style-type: none"> • 23 Capital Allocation from DfE for Sustainability Projects – Internal allocation through Capital bidding process. |
| <p>STCG has strategies in place to reduce energy use and understands the impact on its Carbon Footprint</p> <p>(Estates and Operations).</p> | <p>Report to College Community on actual and targeted energy savings and the impact on the College Carbon Footprint.</p> | <p>June 23</p> | <p>DoFacilities</p> | <ul style="list-style-type: none"> • Annual Report to GLT • Annual Report to FP&R Committee | <ul style="list-style-type: none"> • Contribution to Group's Carbon Reduction Targets | <ul style="list-style-type: none"> • Reports can be published once Carbon Reports are Validated by Net Zero Organisation in Feb 23 and Carbon Reduction Surveys are completed. |
| <p>STCG has a Net Zero Target for 2050 and 2-3 interim targets.</p> <p>(Leadership and Management)</p> | <p>SLT to discuss Draft Carbon Reports and to set out and agree further targets and actions in respect of Net Zero and other Sustainability initiatives.</p> | <p>Feb & May 23</p> <p>May 23 for Targets.</p> | <p>Group Principal & CEO/DoFac</p> | <ul style="list-style-type: none"> • Share Carbon Reports with SLT/GLT & Sustainability Advisory Group. • Set and agree interim Carbon Reduction targets on 18/19 baseline. 50% by 2030 | <ul style="list-style-type: none"> • Meeting Notes and actions. Discussion will ensure ownership of any targets agreed and ensuring that sustainability initiatives are practical and | <ul style="list-style-type: none"> • Carbon Reports and interim targets to be shared with SLT and ESAG February 23 Meeting. • Hard targets established when Carbon Reduction Surveys are completed, |

| | | | | | | |
|--|--|----------|---|---|--|---|
| | | | | 75% by 2040 100% by 2043 | appropriate to the College context. | programme of reduction projects is established and accommodation strategy for 2023 and beyond is set out. |
| STCG has made a public statement recognising the Climate Emergency (Leadership and Management) | Publish Sustainability and Net Carbon Zero Targets. | Feb 23 | DoFac DoMarketing. | <ul style="list-style-type: none"> • Prepare Net Zero Statement • Publish on STCG Website • Publish Statement re switch to Green Energy from 1/10/22. Electricity Certified from Renewable Generation Gas 100% Carbon Offset. | <ul style="list-style-type: none"> • Targets published for internal and external audiences setting out the Groups sustainability ambitions to the whole community. | <ul style="list-style-type: none"> • Presented for discussion at Feb 23 ESAG. |
| It is possible to recycle in every building (Estates and Operations). | Ensure Recycling, Food Waste Facilities and Signage are available in every building. | Ongoing. | DoFacilities Curriculum/ Student Services. DoFacilities. | <ul style="list-style-type: none"> • FMs ensure recycling bins are available in all buildings • FMs ensure Signage is displayed at every recycling point, showing people how to recycle and dispose of waste. • Promote recycling through College competitions, recycling projects etc. • FMs to establish Waste Audits and ongoing | <ul style="list-style-type: none"> • Divert more of Colleges Waste away from Landfill. • Reduction of landfill emissions and pollution that the Group creates. • Educate students about recycling and encourage positive behaviour towards waste. Encourage reuse, reduce recycle approach. | <ul style="list-style-type: none"> • Recycling Facilities are available in all College Buildings across the Group. |

| | | | | | | |
|--|---|---------|--|---|---|---|
| | | | | monitoring and reporting of waste to landfill v recycling . | | |
| It is possible for Students and Staff to make sustainable food choices on campus (Partnership and Engagement). | Work with Catering Service Partner to supply sustainable food options. Set Sustainability Criteria for Catering Contract. Regular review with Catering Service Partner. | Ongoing | DoFacilities/ Catering Service Partner. | <ul style="list-style-type: none"> Identify base line for Sustainability initiatives within existing Catering Contract arrangements with incumbent Service Partner Caterlink Include appropriate KPI and include Sustainability in regular Contract reporting. Reduction of higher emission food offers Reduction of Food Miles Increase in Seasonal Food Offers Increase in Vegan/Vegetarian Menu Options. | <ul style="list-style-type: none"> Offer sustainable food choice offer to reduce personal environmental impact Contribution to positive behaviour change. | <ul style="list-style-type: none"> Reduction achieved in single use consumables. Move from single use plastics to sustainable materials where possible. Sustainability standing agenda item on monthly Contract meetings. Increased Vegetarian and Vegan Food options. Caterlink to contribute to sustainability week in Feb 23. |

Statement of Commitment – Climate Emergency

The South Thames Colleges Group recognises that the Climate Emergency is one of the most urgent problems facing human society and life on our planet. As an educational institution, we accept and welcome the responsibility to take action to reduce our carbon footprint and support an environmentally sustainable future. We therefore commit to take immediate action to reduce our greenhouse gas emissions by:

50% by 2030

75% by 2040

And achieve Net Zero emissions by 2050.

We will report our progress on a yearly basis.

We will confirm our commitment by signing up to be recognised by the United Nations Race to Zero Campaign for Universities and Colleges, joining others around the world that share the same mission and responsibility.

We recognise that action is essential and that this involves both institutional and personal choices.

South Thames Colleges Group will work with students and staff to change institutional practices and will facilitate and encourage individuals to make personal decisions that support a healthy environment.

We believe that sustainability requires a whole Group approach and should be addressed within the Group's curriculum and culture as well as within the Group's estate and operations.


Peter Mayhew Smith

Group Principal

February 2023.



Executive Summary

| | | | | |
|--|---|---|--------------------|--------|
| Meeting | Environment & Sustainability Advisory Group. |  | Date | 9.2.23 |
| Report title | Carbon Reporting – Future Net Zero Accreditation – 2018 to 2022. | | | |
| Author | <i>Sue Lockett, Director of Facilities</i> | | | |
| Action | DECISION | n/a | INFORMATION | Yes |
| Key points | <p>Future Net Zero Standard – Accreditation Report – Carbon Footprint Assessment – Sample Report provided for information.</p> <p>Reports for years 18/19, 19/20, 20/21 and 21/22 are currently with Future Net Zero Organisation Assessor for Assessment and Validation of Carbon Footprint.</p> | | | |
| Recommendations | a) This report is provided for discussion and noting by the Group. | | | |
| Link to strategic objective: | | | | |
| <ul style="list-style-type: none"> 7. Progress STCG climate change response plan, working to achieve ‘emerging’ status within the AoC Roadmap to Sustainability Framework and influencing the Group’s new Estates Strategy. | | | | |
| Implications | | | | |
| Students/curriculum/safeguarding | | | | |
| Financial | Expected Reduction in overhead costs and focusing investment on strategic priorities and invest to save projects. | | | |
| Human Resources | | | | |
| Legal/Statutory/Compliance/Governance | Statutory Reporting Requirement. | | | |
| Equality, Diversity and Inclusion | | | | |
| Reputational | <i>Possible reputational damage in the event of failure to control and report consumption, costs and Carbon Footprint. Reporting in is in the public domain.</i> | | | |
| Related Risk Areas | <i>Financial & Reputational.</i> | | | |

1. STCG are working with Trident Utilities STCG’s Utilities Consultant and Analysts to produce an annual Carbon Footprint Report, using the Groups monthly recorded figures for procurement and consumption of Electricity and Gas, measured in Kilowatt Hours which is then converted into CO₂e emissions (Carbon Dioxide equivalent) using a set methodology via use of carbon accounting software.

2. For the purpose of Carbon Reporting, 18/19 was selected as the baseline year as this was the last normal operating year prior to Covid 19. The recorded emissions are mapped across years in order to track changes/improvement. The attached report for 21/22 is attached as a sample report for information and discussion. A full report with the technical elements of the reports explained will be provided at a later stage, after the reports have been validated and assessor's comments received.
3. Green House Gas Emissions (GHGs) are currently categorised as follows:
 - Scope 1. Direct Emissions – Owned or Controlled Sources (e.g.
 - Scope 2. Indirect Emissions – Purchased Energy
 - Scope 3. Business Travel (Staff Mileage Claims and College owned vehicle usage only)

STCG are currently measuring and reporting on Scope 1, 2 and a small amount of Scope 3

A decision will need to be reached in the future about the feasibility of recording and reporting all Scope 3 emissions:

- Indirect – Value Chain Emissions e.g. suppliers sub-contractors etc.
- Upstream – Purchased/acquired goods
- Down Stream – Sold or produced goods or outputs

4. The Reports for 4 years since 18/19 have been submitted to Future Net Zero Organisation for Assessment and Validation of STCG's Carbon Footprint. This gives credibility and assurance for the Annual Reporting process. The group will sign up to United Nations Race to Zero Campaign for Universities and Colleges from Feb 23. This will be reflected in future reports.
5. From 21/22 onwards, the Reports will include the change in the procurement of energy. From October 22, STCG moved to procurement of Offset and Green Electricity and Gas. This will count towards carbon reduction and provide a greater contribution to a reduced footprint.

UNFCCC RACE TO ZERO – PLEDGE & PLAN

RACE TO ZERO PLEDGE

Declaration of Participation – Community Member Company

Our company recognises the importance of making a full and lasting commitment to reducing the greenhouse gas emissions from our activities, in support of the wider commitment of the world to limit global temperature increases and the impact on the planet.

As a signatory member of the Network Net Zero Community we commit to the following:

1. For our company to achieve Net Zero in line with the Science Based targets set out by the UNFCCC i.e. to achieve Net Zero no later than 2050 and target a 50% reduction in emissions by 2030.
2. To set realistic short and long term targets that are designed to achieve our Net Zero commitments.
3. To report the total Greenhouse Gas emissions of our business regularly and for our performance to be part of the Community's annual reporting back to the UNFCCC.

We acknowledge that our commitment will be reported on the Network Net Zero website.

[-] made its pledge to the Race to Zero via the Network Net Zero Community on [-]. The record of the pledge can be found at <https://www.futurenetzero.com/un-race-to-zero/>.

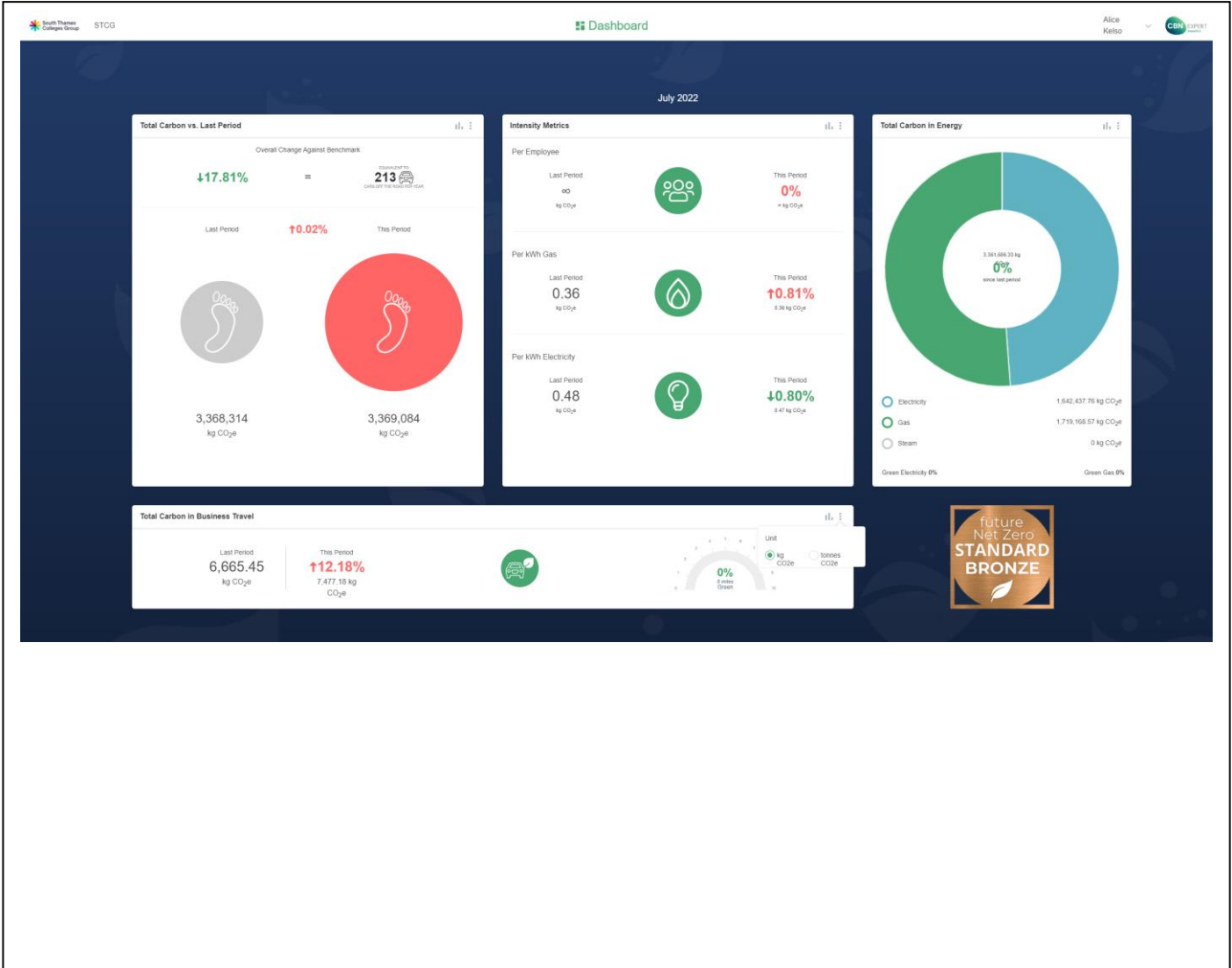
| | Year | Potential Year (if ahead of target) |
|--------------------------------|-------------|-------------------------------------|
| Pledge to be Net Zero | 2050 | |
| 50% Emissions Reduction | 2030 | |

KEY HIGHLIGHTS OF OUR NET ZERO STRATEGY

South Thames Colleges Group have not signed up to race to zero but are committed to achieving the principles of Net Zero and the Group's Net Zero Targets as set out above.

FUTURE NET ZERO STANDARD ACCREDITATION REPORT- (August 2021 – July 2022)

CARBON FOOTPRINT ASSESSMENT



Carbon Footprint Progression

| | Benchmark 18/19. | Year 2 19/20 | Year 3 20/21 | Year 4 21/22 | Year 5 22/23 | Year 6 | Year 7 | Year 8 |
|----------------------|---------------------|-----------------|-----------------|-----------------|-----------------|--------|--------|--------|
| kg CO ₂ e | 4,099,186 | 3,533,681 | 3,388,578 | 3,369,084 | | | | |
| % Change | | -14% | -17% | -18% | | | | |

HISTORIC EMISSION REDUCTION PROGRESS DURING THE REPORTING PERIOD

Emissions reduction activity is summarised below:

| Energy | Consumption - kWhs | | | | | Green Consumption - kWhs | | | | |
|--------------|--------------------|-------------------|------------|-------------------|---|--------------------------|----------|---|---------|---|
| | Benchmark | Previous | % | Current | % | Benchmark | Previous | % | Current | % |
| Electricity | 7,850,987 | 6,471,638 | -18% | 7,106,429 | | | | | | |
| Gas | 10,404,347 | 10,112,686 | -3% | 9,386,157 | | | | | | |
| Total | 18,255,334 | 16,584,324 | -9% | 16,492,586 | | | | | | |

Commentary

The total energy consumed is 16,492,586 kWh, which is equivalent to 3,361,606.33 kg CO₂e.

One of the factors influencing a reduction in energy consumption from the baseline was COVID-19. Also, STCG is using Carbon Accounting software to map the total Carbon Footprint and record emissions on a monthly basis in order to track improvement.

Electricity and gas consumption data was obtained from Utilities supplier invoices and have been verified with the South Thames Colleges Group Accounts Department.

| Business Travel | Travel - Miles | | | | | Green Travel - Miles | | | | |
|-----------------|----------------|---------------|-------------|---------------|-------------|----------------------|----------|---|---------|---|
| | Benchmark | Previous | % | Current | % | Benchmark | Previous | % | Current | % |
| Cars | 22,097 | 9,677 | -56% | 21,822 | -1% | | | | | |
| Van | 7,320 | 3,240 | -56% | 3,240 | -56% | | | | | |
| Total | 29,417 | 12,917 | -56% | 25,062 | -15% | | | | | |


Commentary

The total miles are 25,062 which is equivalent to 7,477.18 kg CO₂e.

Grey fleet figures are obtained from Group Mileage expense claims. This is for business travel undertaken by staff on College business using own private vehicles.

Company vehicle travel figures are obtained from a combination of annual servicing/MoTs and internal records for petrol consumption/mileage for Group Fleet Vehicles comprising Minibuses, Light Vans and Cars.

CARBON EFFICIENCY ASSESSMENT

| <i>Intensity Metrics</i> | <i>Benchmark</i> | <i>Previous Year 3</i> | <i>% Change</i> | <i>Current Year 4</i> | <i>% Change</i> |
|---|---------------------------|---------------------------|-----------------|---------------------------|-----------------|
| | kg CO ₂ e/unit | kg CO ₂ e/unit | | kg CO ₂ e/unit | |
| <i>Per m² Office Space</i>  | 48.83 | 40.37 | -17.34% | 40.13 | -17.81% |

Commentary

South Thames College Group in its current form, was formed through Merger in 2017. The Group operates as four Colleges across six sites, located in four London Boroughs. Kingston College, Kingston Creative Industries Centre, Wandsworth College, Tooting Adult Centre, Merton College and Carshalton College. The Estate comprises of some 83,948 square meters of varying age and condition. The Group offers a wide range of academic and vocational education and training to approximately 22,000 students ranging in age from 16 to adult.

Action Plan (including short term targets) to reduce carbon footprint and achieve net zero

The plan is to reduce STCG overall footprint by 2030 by 50% and to achieve Carbon Net Zero by 2043.

How STCG will do this:

- Adoption of Road Map to Emerging College Status by June 2023. – Establishing our Carbon Base Line and production of a Carbon Reduction Plan.
- All buildings surveyed and detailed Carbon Reduction Plans for each building established by 2024. Actions incorporated into the Group's Capital Expenditure Programme over 10 years.
- New Estates Strategy established from March 23 to rationalise the Estate and reduce excess space
- Switch to Carbon offset and Green Electricity and Gas from October 22 (Achieved Oct 22)
- Replacement of all Windows on Kingston Tower Building – Summer 23
- Installation of new BMS at Kingston and Merton Sites.

Quick wins in 2023:

- Reduce Heating hours and reduce set temperatures by 1 degree.
- Switch it off campaign
- Appointment of Trident Utilities to monitor water consumption savings and analyse use for future consumption reduction planning.

Carbon Reduction Plan:

- Will be set out in detail for each site once building surveys are completed and new Estates Strategy is in place from 2023 (as set out above).

Assessor's comments

This report produced by Trident has been reviewed by future Net Zero on 4th January 2023 in line with the FNZ Standard. It has been reviewed again on 5th February 2023 following some minor amendments which were identified in the initial audit.

The report is a fair reflection of scope 1 and 2 emissions. The report does not cover scope 3 emissions. future Net Zero recommends STCG work towards creating a report that covers scope 3 emissions within the supply chain, as this is where 70-99% of a company's emissions will be.

Overall, this report meets the current requirements to achieve the FNZ Standard.

Assessor Signature:



Assessor Name: Ellis Hall

Date: 7th February 2023

Standard and methodology used

South Thames Colleges Group categorises its Greenhouse Gas (GHG) Emissions as Scope 1,2 or 3 as referred to in the WBCSD – WRI Greenhouse Gas Protocol (revised edition, dated March 2014). Emissions in Carbon Dioxide equivalent (CO₂e) for all scopes are calculated using the conversion factors listed in BEIS Greenhouse Gas Conversion Factors for the relevant 12 month period over which the Carbon Footprint is calculated. Procured renewable electricity and gas is calculated in accordance with the WBCSD – WSI Scope 2 Guidance on procured renewable energy (2015).

Data Quality / Confidence

The data used to generate this report has been collected from various sources and converted to CO₂e using the CBN Expert Dashboard. This dashboard has been Certified under the future Net Zero Standard to ensure that it is a true and fair reflection of the both the units of consumption and the resultant GHG emissions of the reporting firm.

***Scope 3 Emissions**

South Thames Colleges Group is committed to measure and act to reduce its emissions in all 3 categories. This report reflects the amount of Scope 3 emissions that it has been technically feasible and cost effective to measure and take action against. [Company name] remains committed to work with its entire supply chain to ensure as much of its Scope 3 emissions are able to be accurately measured and to develop actions that target long term reductions in this emissions category.

**** Offsets**

As part of the commitment of South Thames Colleges Group to target reductions in its GHG emissions and, ultimately, attain Net Zero the company will review and report all offsetting that it enters into. All offsetting options will be considered and reported included, formally certificated schemes (e.g. Gold Standard) as well as more informal schemes. Where offsetting is done against informal schemes, details of the calculation logic will be reported.

Offset schemes (if appropriate)

| Scheme name | Details including weblink |
|-------------|---------------------------|
| | |
| | |

Signed on behalf of South Thames Colleges Group

Signed on behalf of Trident Utilities




Name: Susan C. Lockett
 Position: Director of Facilities
 Date: 13.01.23

Name: Alice Kelso
 Position: Analyst
 Date: 16.01.2023



The data in this report has been produced using the CBN Expert dashboard and the figures have been certified under the future Net Zero Standard. The certification and licence number for the period for this report is shown here.

Signed for future Net Zero

Date: 08/02/2023

Name: Sumit Bose

Position: Founder

